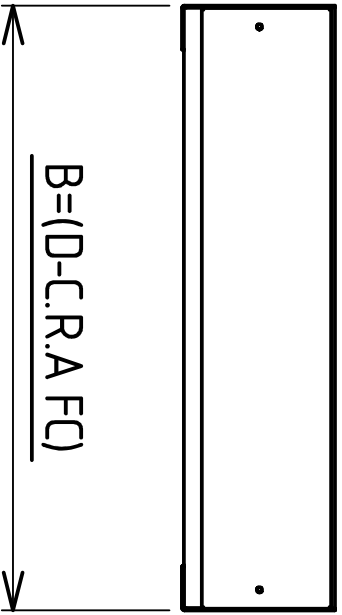
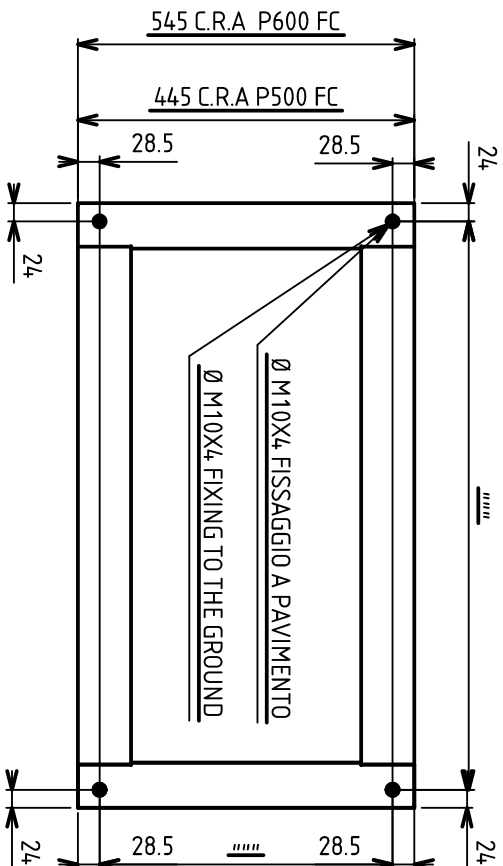
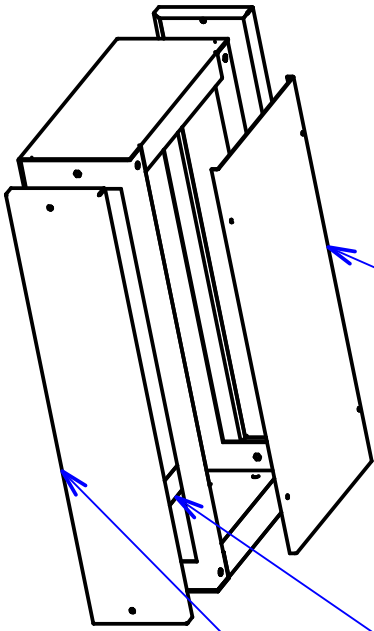


ARTICOLO/ARTICLE: B.S H 200 FOR C.R.A FC

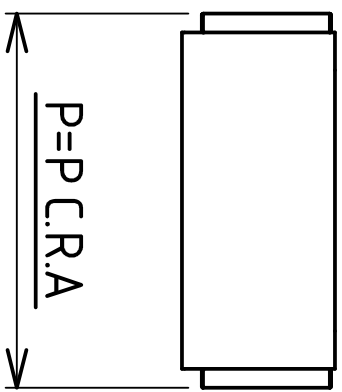
TAPPO LAMIERA ZINCATA 15/10
CAP GALVANIZED 15/10

4 M10X20 BULLONI PER LIVELLAMENTO
4 M10X20 BOLTS FOR LEVEL

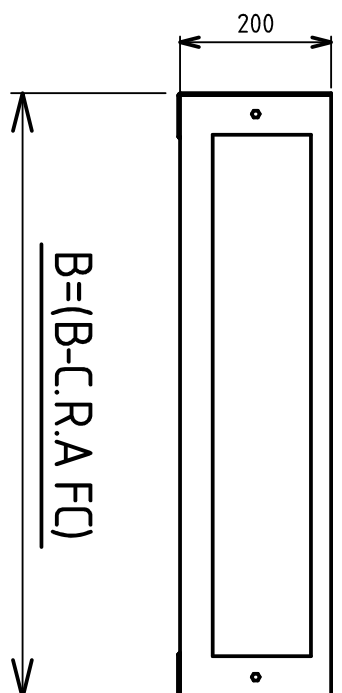
FRONTALINI :ART.28
CLOSING LOW :ART.28



ASSEMBLATO/ASSEMBLED



ASSEMBLATO/ASSEMBLED



NUDO/NAKED